

Do things wisely  
Be trustworthy  
Be forging ahead  
Be responsible

**Wisely Laser Machinery Limited**

**深圳市威斯利激光设备有限公司  
智锐激光设备有限公司**

No.10 Building, No.4 Industry Zone Heshuikou,  
Matian, Guangming, Shenzhen 518106 CHINA  
深圳市光明区马田街道合水口第四工业区第十栋

Tel: +86-0755 3299 8419

Mob: +86-15013509330

E-mail: sales@wwlaser.hk

Site: www.wiselylaser.com

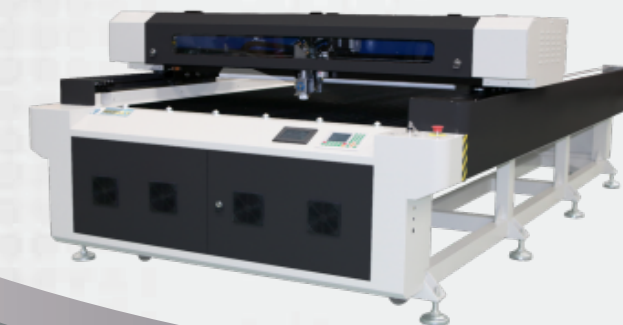
www.wwlaser.com

**www.wiselylaser.com**

**Laser Marking/Etching/Engraving/Cutting Solution Provider**



LASER RADIATION  
DO NOT STARE INTO BEAM  
CLASS 4 LASER PRODUCT



Laser Marking/Etching/Engraving/Cutting Solution Provider  
[www.wiselylaser.com](http://www.wiselylaser.com)

**Metal & Plastic Laser Marker/Engraver/Cutter**  
**Laser Marking/Engraving/Cutting System**



Do things wisely

智

Be trustworthy

信

Be forging ahead

锐意

Be responsible

敢担当



电话: 0086-150-13509330 邮箱: wwllaser@qq.com



力争做中国最好的激光打标、激光雕刻和激光切割工艺整合方案供应商!  
To be the best solution provider of LASER MARKING, ENGRAVING and CUTTING TECHNOLOGY in China!

## About WISELY

**W**isely Laser manufactures the high-performance laser marking machine, laser engraving machine and cutting machine with unbeatable results in China. We built very good business partnership with Germany SIEMENS, Korea DOOSAN, India TATA Auto etc.

我司專業生產高性能激光打標機、激光雕刻機以及激光切割機數年，產品暢銷亞非拉各國，遠銷歐美市場。目前，我司已與德國西門子電子、韓國斗山重工、印度塔塔汽車等知名廠家建立战略合作夥伴關係。

**W**e also have the most highly-regarded technical support team in the industry. We're committed to helping our customers succeed - before, during and after the sale.

我司擁有專業、高效與負責的技術團隊和銷售隊伍，可給客戶提供良好的售前體驗、售中匯報和售後技術服務。

**W**isely Laser Mission - To make customers HAPPY with wisely laser engraving machines! To be recognized as China's foremost manufacturer and supplier of laser machines! Dedicated to providing the best-quality laser equipment for customers around the world!

使命：讓顧客因擁有我們的設備而開懷！力爭做世界範圍內最好的激光打標、激光雕刻和激光切割工藝整合方案供應商。



**Wisely Laser Machinery Limited**  
**深圳市威斯利激光设备有限公司**  
**智锐激光设备有限公司**

No.10 Building, No.4 Industry Zone Heshuikou,  
Matian, Guangming, Shenzhen 518106 CHINA  
深圳市光明区马田街道合水口第四工业区第十栋  
Tel: +86-0755 3299 8419  
Mob: +86-15013509330  
E-mail: sales@wwllaser.hk  
Site: www.wiselylaser.com  
www.wwllaser.com





Laser Mark Series

Fiber Laser Marking Machine 光纖激光打標機

MY-M20F-II

Open worktable, easy to load and unload the material, can work with customized automatic matching system, software pre-installed in the industry computer, parameter adjusted before shipment.  
桌面式結構，方便上下料。預裝電腦與控制軟件，上電開機直接使用。可匹配定制化自動化系統。



MY-M20F-III

Small size, impact structure, portable and light, suitable for transportation and automation.  
便攜式結構，機身緊湊、重量輕、體積小、方便運輸與放置，方便與其他自動化設備配套使用。



MY-M20F-V

There is a firm protection cover for the machine, it is very suitable for the machine sales in developed countries, it can protect you from hurting when the machine is working.  
封閉式結構，整機帶防護罩、配置開蓋保護功能、實時保護操作者人身安全，安全等級高。



Introduction 產品介紹

Wisely Laser manufactures the fiber laser marking machine with pulsed fiber laser source and MOPA laser source at the request of customers. We always work with the best suppliers of fiber laser source throughout the world, such as IPG, SPI, RoFin, Raycus and JPT. It is free of maintenance, stable performance, high reliability and long life-span, capable to work for 24 hours without interruption.

威斯利光纖激光打標機根據工藝所需，可分為脈衝激光打標機和MOPA光纖激光打標機兩類。精選國內外最優秀的激光器生產品牌為長期戰略合作夥伴，例如IPG、SPI、羅芬、銳科和杰普特。本公司之光纖激光打標機具有速度快、精度高、光斑精細、出光穩定、能耗低、無易耗品和免維護等優點。激光器壽命長、可連續工作24小時不中斷，最高可使用20萬小時。

Application 產品應用

WISELY fiber laser marking machine can work with most metal and non-metallic marking applications, such as Gold, Silver, Stainless Steel, Carbon Steel, Mild Steel, Chrome Steel, Brass, Copper, Aluminum, Acrylic, ABS, Nylon, PES, PVC, Makrolon etc.

The fiber laser marking machine is mainly used in the field of electronic components, mechanical parts, instrument, hardware tools, auto parts, daily necessities and so on.

該設備可加工大部分金屬材料和部分非金屬材料，如下：金、銀、銅、鐵、原生鋁，氧化鋁、不鏽鋼、鉻鋼、軟鋼、碳鋼、亞克力、ABS、尼龍、PVC等。

此光纖激光打標機主要用於電子元器件、機械零部件、儀表儀器、五金工具、汽車零部件、衛浴、日用品等領域。

Technical Information 技術參數

Model 型號	MY-M20F-II	
Laser Power 激光功率	20W	
Optional Laser Power 可選激光功率	30/50/60/70/100W	
Marking Area 打標範圍	150*150mm	
Optional Marking Area 可選打標範圍	70/100/175/200/220/250/300/400/500*500mm	
Fiber Laser Source 激光器	JPT	
Optional Fiber Laser Source 可選激光器	IPG/SPI/Raycus	
Life-span of Laser Source 激光器壽命	100 000 - 200 000 hours	
Laser Wavelength 激光波長	1064nm	
Beam Quality 光束質量	M <sup>2</sup> <1.5	
Marking Speed 打標速度	7000mm/s	
Min Line Width 最小線寬	0.015mm	
Min Character 最小字符	0.2mm	
Repeated Positioning Accuracy 重複定位精度	0.006mm	
Operation Environment 運行環境	Temperature 10-28℃ 溫度 10-28℃	Humidity <70% non-condensed 濕度 < 70% 無凝結水



## Laser Mark Series

### Automation for Fiber Laser Marking Machine 光纖激光打標機配套自動化

#### Automation: 1D Moving Table



Wisely made the 1D Moving Table with PLC for customer from East Malaysia, the automation is especially for the aluminum or stainless steel bar. Our customer uses the machine for 4000mm ruler marking for the oil companies and gas station, just to measure the stock. The laser marking effect on the aluminum bar will be everlasting.

威利利根據馬來西亞客戶要求生產光纖激光打標機，配帶一維工作平台，內置PLC，專為電鍍鋁條刻度打標而設計。可在鋁條上打標長度為4000mm的刻度，打標精度高達0.05mm。打標完成後的鋁條，激光打標效果持久永恆，非常適用於石油公司油庫內石油或加油站汽油存量測量。

#### Automation: 1D Moving Table



This machine is equipped with a 1D moving table. There are two work stations, and one fixture can be placed on each work station. Fixtures can be customized according to the customer's actual situation or commissioned by our company. Multiple pieces of marking objects can be loaded in the fixture. When a marking object in one fixture is processed, the marking object in another fixture can be unloaded and loaded. The two stations alternately operate to complete repetitive actions such as loading, marking, moving, unloading, then repeating. It saves time and labor costs, and can also ensure the marking position accurately on non-standard items.

此機器配置一維工作平台，有兩個工位，每個工位上可放置一個夾具。夾具可根據客戶的實際情況自行訂做，或委託我司訂做。夾具內可裝載多件打標物件，一個夾具中的打標物件在加工時，可以卸載和裝載另一個夾具中的打標物件。兩個工位交替運行，完成裝載、打標、移動、卸載以及裝載等重複動作。節約加工時間和勞動力成本，也能保證非標準物件的打標位置準確。

#### Automation: Rotation Table



Rotation Table is very suitable for pen or similar objects marking. The table frame adopts anodized aluminum and the table is built with DD Motor from Japan, which guarantees the rotation table can work with high precision, high speed, high loading capacity and free maintenance.

此機器配置旋轉圓盤專為鋼筆或類似的長形物件打標，客戶也可根據實際需要自行設計夾具，然後固定到圓盤上，即可實現多樣化非標物件自動化打標。旋轉圓盤機身由氧化鋁材料製作，內部使用DD馬達，圓盤具有高精度、高速度、高負載能力和終生免維護優點。

#### Automation: Conveyors



This machine is equipped with two sets of conveyor, designed to improve the efficiency of marking bearings or similar objects. The transmission speed can be adjusted easily, and the cylinder position can be adjusted according to the size of bearings. We can supply the loading and unloading device at the request of clients. The two conveyors can improve the processing efficiency by alternate marking, alternate feeding and alternate unloading.

此機器配置兩套流水線，專為提高打標軸承效率而設計。傳動速度可調節，氣缸位置可根據軸承尺寸進行調節，可根據客戶要求加載上料和下料裝置。兩條流水線可實現交替打標和交替上料和交替下料，提高加工效率。

#### Automation: Robotic Arm



The robotic arm of the machine is equipped with PLC controller, control software, servo driving system and linear-guiderail transmission system. Compact structure, high speed and precision. The action of moving up, moving down, moving left, moving right, grabbing and releasing are completed with double coil, three solenoid valve and pneumatic cylinder. The robotic arm is very suitable for the packaging and nameplate of electronics, food, beverages, small gift and so on.

此機器配置之機械手由PLC，控制軟件伺服電機控制，並匹配高精度運動模組實現傳動。採用占用空間少的框架式結構，抓取速度快以及運動精度高。上升、下移、左移、右移、抓緊和放鬆都是用雙線圈三位電磁閥氣動缸完成。機械手適用於電子、食品、飲料、烟酒等行業的紙箱包裝或銘牌打標。

#### Automation: Auto Focus with CCD



This machine is equipped with an auto-focusing function that makes it easy to achieve fast auto-focusing on materials of different thicknesses, which is a perfect alternative to manual focusing. The sensor adopts the famous Japanese brand and has the characteristics of high sensing precision, accurate testing distance, fast feedback and long life-span. And CCD camera.

此機器配置之自動聚焦功能，可輕鬆實現在不同厚度材料上的快速自動聚焦，完美替代人工手搖聚焦。傳感器採用日本著名品牌，具有感應精度高、測試距離準、反饋速度快和使用壽命長等特點。



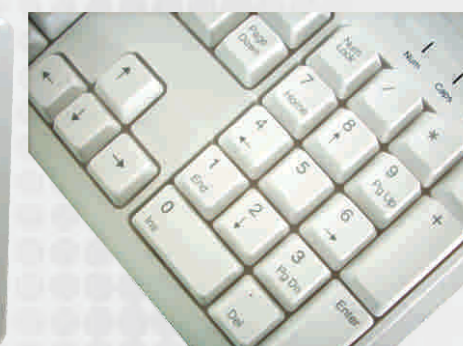
Applicable Materials 適用材料



Metal Materials

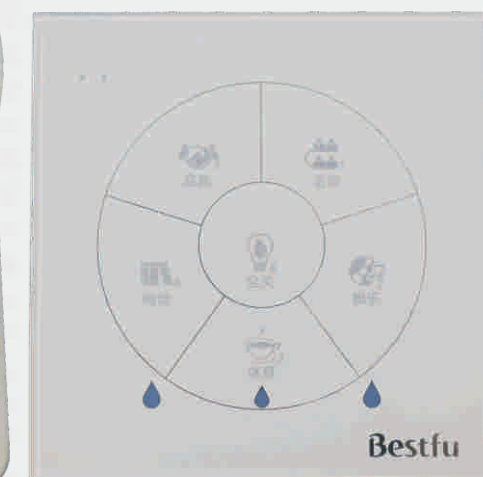
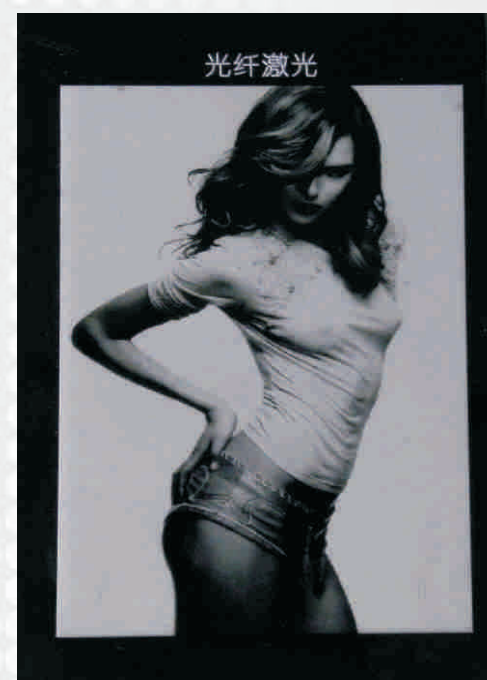
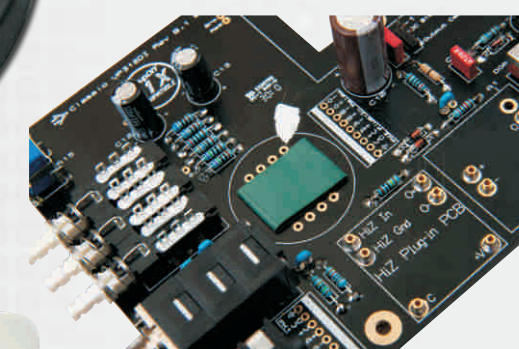
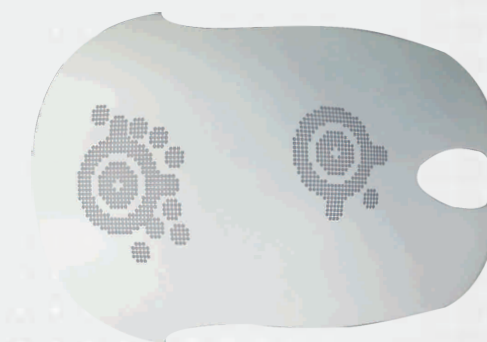
Aluminum (Anodized/Polished)  
Brushed aluminum  
Brass  
Copper  
Chrome  
Carbide  
Cast iron  
Chrome steel  
Gold  
Molybdenum  
Machine tool steel  
Multi-Coated Metals  
Nickel-plated brass  
Nickel-plated gold  
Nickel-plated steel  
Silver  
Steel  
Stainless Steel  
Stainless Chrome  
Silicon steel  
Titanium  
Zinc plated mild steel  
And more.....

Applicable Materials 適用材料



Non-metallic Materials

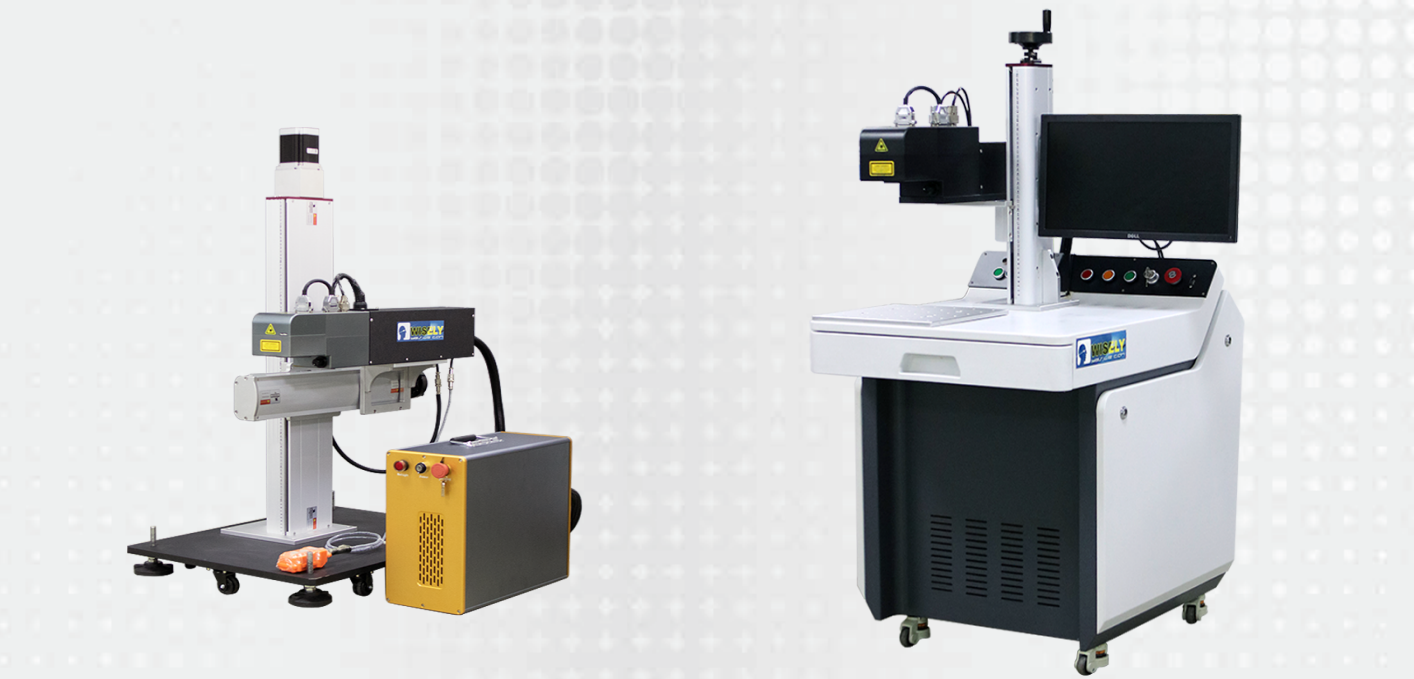
ABS (Black/White)  
Ceramics  
Carbon fiber  
Carbon nanotube  
Coated Non-metallic material  
Makrolon  
Metal-plated ceramics  
Nylon  
PVC  
Plastics  
PEEK (white)  
PET  
Painted Non-Metallic material  
Rubber  
And more.....





Laser Mark Series

3D Fiber Laser Marking Machine 3D光纖激光打標機



Introduction 產品介紹

Wisely 3D fiber laser marking machine adopts the imported core components, with high-speed, high precision 3D galvo scanner, and with our 3D specified software and control system, it can engrave on any curved object in a fine process, there is no off-focus problem. It can also adjust focus length any time for deep engraving, which makes process efficiency and marking quality much better than traditional 2D fiber laser marking machine. we make real 3D marking function come true, leading a new era of laser processing.

威克利3D系列三維激光機採用進口核心器件，配置高速、高精度3D振鏡，結合我公司自主開發的3D專用軟件及控制系統，完美實現對任意曲面工件的精細加工，無離焦點現象;也可對深度雕刻焦點實時踪，使加工效率及質量較傳統2D打標機更優。真正意義上全面實現3D標記功能，引領激光加工進入新紀元。

Features 產品應用

- 1. Can do smooth and uniform 3D marking effect on slope, cylinder, cone, ball and so on.
- 2. Terrific big central angle marking , the max. central angle can reach 117 degree on cylinder.
- 3. Perfectly present target graphics on work pieces, avoid deforming such as elongation and slope.
- 4. Auto Focus function can be triggerred by one button on machine.
- 5. The lifespan of fiber laser source can reach at 100 000 - 200 000 hours.
- 6. No Consumables: One marker can work for more than 10 years without any consumables.
- 7. The fiber laser beam comes out from the fiber device directly, no need to adjust the laser optical path.
- 8.High-stability controller, USB interface, swift and stable transmission, route optimization, intelligent calculation, easy software.

- 1、實現斜面、段差、圓柱、圓錐、球面，以及拉伸曲面等多種3D標記模式。
- 2、不可思議的超大圓心角打標，在圓柱體上能夠打到117°圓心角的位置。
- 3、在打標工件上，完美呈現目標打標圖形，避免出現拉長、傾斜等變形。讓刻印圖案更加接近原本形態。
- 4、機身配置自動對焦按鍵，一鍵輕鬆搞定焦距。
- 5、激光器壽命可達10-20萬小時。
- 6、整機無耗材。正常使用情況下，整機可使用長達十年。
- 7、激光光束直接從激光器發出，無需矯正激光光路。
- 8、高穩定性控制卡，USB端口，傳輸穩定與便捷。人性化操作界面，簡單易學上手快。

Technical Information 技術參數

Model 型號	MY-M20F-II(3D)	
Laser Power 激光功率	20W	
Optional Laser Power 可選激光功率	30/50/60/100W	
Marking Area 打標範圍	100*100mm	
Optional Marking Area 可選打標範圍	70/100/175/200/250/300*300mm	
Fiber Laser Source 激光器	JPT	
Optional Fiber Laser Source 可選激光器	IPG/SPI/Raycus	
Life-span of Laser Source 激光器壽命	100 000 - 200 000 hours	
Laser Wavelength 激光波長	1064nm	
Beam Quality 光束質量	M <sup>2</sup> ≤1.5	
Marking Speed 打標速度	10000mm/s	
Min Line Width 最小線寬	0.03mm	
Min Character 最小字符	0.2mm	
Repeated Positioning Accuracy 重複定位精度	0.006mm	
Operation Environment 運行環境	Temperature 10-28℃ 溫度 10-28℃	Humidity <70% non-condensed 濕度 < 70% 無凝結水



Laser Mark Series

Green Laser Marking Machine 綠光激光打標機

3D Crystal/Glass Interior Laser Marking 3D水晶/玻璃內雕



Introduction 產品介紹

The machine adopts 532nm green laser source, is very professional for interior engraving for personalized artwork applied on many kinds of glass, crystal & acrylic. Can engrave 2D / 3D file, mass Production Available.

此機採用波長為532nm的綠光激光器，可在水晶或玻璃內部打標或雕刻。激光器頻率可達4K，加工速度快。無噪音污染、無水污染、無氣體污染以及其他化學污染，真正環保！可雕刻2D或3D圖案，可批量生產。

此機特別適合水晶、玻璃以及透明亞克力內部激光打標。

Application 產品應用

Suitable for fine model engraving processing centers, gift shops, craft shops, photo printing shops, wedding photography, personalized gifts shops, souvenirs etc.

此機非常合適精細模型加工中心，旅遊中心禮物店、照片印刷店、婚紗影樓、個性化禮物店等等。

Technical Information 技術參數				
Model 型號	3KA	3KB	4KA	4KB
Marking Area 打標範圍	200*150*80mm	400*300*130mm	200*150*80mm	400*300*130mm
Frequency 頻率	3000HZ		4000HZ	
Marking Speed 打標速度	180 000 - 200 000 dots/min		200 000 - 240 000 dots/min	
Green Laser Source 激光源	Semiconductor Diode			
Laser Wavelength 激光波長	532nm			
Focus Diameter 聚焦直徑	0.02mm			
Resolution 分辨率	800-1500dpi			
Life-span of Laser Source 激光器壽命	25000 hours			
Axis-moving 軸運動	XYZ Axis + Galvo Scanner XY			
XYZ Axis XZY軸	Taiwai Ballscrew and Linear Guiderail 台灣進口滾珠絲杠和線性導軌			
Positioning Accuracy 定位精度	10um			
Software Language 軟件語言	English / Chinese / Russian / Arabic / Portuguese 中文/英文/俄文/阿拉伯文/葡萄牙文			
Operation Environment 機器使用環境	Temperature 10-28℃ 溫度 10-28℃		Humidity <70% non-condensed 濕度 < 70% 無凝結水	
Dimension 淨尺寸	90*65*120mm			
Package Size 包裝尺寸	110*80*143mm			
Net Weight 淨重	200KG			
Gross Weight 毛重	294KG			
Optional Device 可選配置	3D Camera / 2D-to-3D Software			

Sample Show

樣品展示





Laser Mark Series

Green Laser Marking Machine 綠光激光打標機

Large-format Glass Interior Laser Marking 大呎寸玻璃內雕

Introduction 產品介紹

Large-format glass laser marking machine developed by WISELY LASER is specially designed for innovation of art glass, which is inner marking/engraving, frosted marking on the surface, embossing and drilling of glass. This machine with low noise, high-speed, high precision, low consumption, low labor cost, maintenance free and eco-friendly. The machine is the best model for company upgrading and designer's idea showing. There will be no limitation for your creativity and innovation from now on.

威斯利激光研發大幅面平面玻璃內部激光打標機，專門針對玻璃表面磨砂效果打標、內部平面雕刻、內部浮雕等激光加工工藝而設計。此款機器無噪音污染、無水污染、無氣體污染以及其他化學污染，真正環保！速度快、雕刻精細、可持續7\*24小時不間斷工作、省人工和免維護。

同時，此機也是設計師展現作品的最佳設備，創意此刻起將不再受限。

Feature 產品特性

- Available personalization image
  - Excellent engraving effect
  - Suitable for mass production
  - Intelligent, work fast and convenient
  - Save energy and protect environment
- 雕刻幅面可個性化定制
  - 雕刻效果精美，圖案細膩，傳統工藝無法媲美
  - 適合大批量加工
  - 智能化、雕刻工作快速、簡便，可無人值守
  - 節能環保，改變傳統工藝對玻璃的加工方法

Application 適用領域

Suitable for advertising, building partition decoration, household application, pictorial art viewing, wedding photo, industrial glass processing design, etc.  
廣泛應用於廣告、建築隔斷、KTV或俱樂部內部裝飾、家居生活用品、藝術寫真觀賞、婚紗攝影及工業玻璃生產設計等。



Technician Information 技術資料

Model 型號	MY-M1280G	MY-M1325G	MY-M1530G
Marking Area 打標範圍	1200*800*110mm	2500*1300*110mm	3000*1500*110mm
Frequency 頻率	4500HZ		
Marking Speed 打標速度	280 000 dots/min		
Green Laser Source 激光源	Semiconductor Diode		
Laser Wavelength 激光波長	532nm		
Dot Size in glass 玻璃內光斑尺寸	80-120um		
Resolution 分辨率	800-1200dpi		
Life-span of Laser Source 激光器壽命	25000 hours		
Axis-moving 軸運動	XYZ Axis + Galvo Scanner XY		
XYZ Axis XZY軸	Taiwai Ballscrew and Linear Guiderail 台灣進口滾珠絲杠和線性導軌		
Positioning Accuracy 定位精度	<0.02mm		
Software Language 軟件語言	English / Chinese / Russian / Arabic / Portuguese 中文/英文/俄文/阿拉伯文/葡萄牙文		
Operation Environment 機器使用環境	Temperature 10-28℃ Humidity <70% non-condensed 溫度 10-28℃ 濕度 < 70% 無凝結水		
Power Input 電源輸入	220V/50HZ/1P or 110V/60HZ/1P		

Sample Application 樣品展示





Laser Mark Series

Co2 Laser Marking Machine CO2激光打標機



Introduction 產品介紹

With superior laser beam, small divergence angle and the integrated laser structure, it is of convenient maintenance, stable performance, high reliability and long life-span, capable to work for 24 hours without interruption. The laser power is controlled with software and the frequency is adjustable continuously. The equipment is of low processing cost, without any consumption and with small power, its marking area is large and clear, not easy to be worn and of high efficiency.

該設備採用美國進口激光器，配置大光斑高速度振鏡，進口擴束鏡和場鏡，具有出眾的激光束，發散角小，集成式激光器結構，維護方便、運行穩定、性能可靠、壽命長、可連續工作24小時不中斷。該設備加工成本低，無易耗品、功率小、標識面積大、清晰、不易磨損和效率高。

Feature 產品特點

1. Adopt the RF CO2 laser source imported from USA Synrad, superfine laser beam and long life-span.

2. Air-cooling system, high stability, can work for 24 hours continuously.
- 1.美國原裝進口新銳可充氣二氧化碳激光器，壽命長，單次充氣可達25000小時。超精細光斑，非常適合做精細效果打標；

2.智能風冷系統，內設高溫或低溫報警系統，高穩定性，可連續工作24小時。

Application 產品應用

This machine can mark on most non-metallic materials, such as PVC, ABS, acrylic, rubber, bamboo, organic materials, glass, wood, paper, etc.

It is suitable for the industry of woodworking, craft gifts, electronic components, clothes, leather products, paper, medicines, food and package, etc.

該設備可加工絕大部分非金屬材料，如下：PVC、ABS、亞克力、塑料、竹材、有機材料、環氧化物樹脂、玻璃、木材和紙張等

可廣泛應用於如下領域：木工、工藝禮品、電子元件、服裝、皮革製品、賀卡、藥品、食品和包裝等。

Technician Information 技術資料

Model 型號	MY-M30C	
Marking Area 打標範圍	100*100mm	
Laser Power 激光功率	30W	
Optional Laser Power 其他可選激光功率	10W/60W/100W	
Marking Speed 打標速度	7000mm/s	
Laser Wavelength 激光波長	10600nm	
Co2 Laser Source CO2激光器	US Synrad	
Min Line Width 最小線寬	0.10mm	
Min. Character 最小字符	0.3mm	
Operation Environment 機器使用環境	Temperature 15-30℃ 溫度 10-30℃	Humidity <70% non-condensed 濕度 < 70% 無凝結水
Power Input 電源輸入	220V/50HZ/1P 110V/60HZ/1P	

Sample Show 樣品展示





Laser Mark Series

Greeting Card Laser Marking Machine CO2 賀卡切割機



Introduction 產品介紹

As the high-tech product, CO2 Dynamic Laser Marking Machine adopts the technologies of Laser, Optics, Precision Machinery, Electronic technology, PC software technology and Cooling Project.

The machine adopts the 10.64um CO2 laser source, which can satisfy the application in different industries such as marking, cutting, engraving, color removal, paint processing, material micro-processing and etc. The equipment adopts Aluminum frame structure, and the latest motor driving in the whole worktable platform to ensure the stable qualities. The adjustment of laser optical path is driven by two galvanometer motors(XY), and the third axis is driven by pre-scanning gathered system to make a wildly adjustment for focus distance.

作為高新技術產品，CO2動態激光打標機採用激光，光學，精密機械，電子技術，PC軟件技術和冷卻工程技術。

該機採用10.64um CO2激光源，可滿足不同行業在打標，切割，雕刻，除色，油漆加工，材料微加工等方面的應用。設備採用鋁框架結構，最新電機在整個工作台平台上駕駛，確保穩定的品質。激光光路的調整由XY軸電機與鏡片驅動，第三軸由預掃描聚焦系統驅動，以大幅度調整焦距。

Feature 產品特點

1. This machine adopts 3D Dynamic Galvanometer Control System. Original imported metal RF laser tube with high laser power, excellent laser spot, stable laser generation and lifetime of more than 20000hrs, gas inside the tube can be refilled again.

2. Fully enclosed laser optical system, no adjustment or free maintenance.

3. American CTI 3D dynamic scan head, 3D dynamic galvanometer control system and automatic up&down Z axis ensure the best processing results.

4. Strict multiply protection control system can be applied in wild operation temperature, to make sure the stable continuous working of 24h of laser marking system.

5. Software supports PLT, DXF, BMP, AI or other format files which are output by AutoCAD, CorelDraw, PhotoShop and so on.
1. 本機採用三維動態振鏡控制系統。原裝進口可充氣射頻激光器，激光功率高、光斑出色，出光穩定，激光器壽命長達20000小時以上。

2. 全封閉式激光光學系統，無需調整或免費維修，軟件預裝，開機上電即可使用。

3. 美國CTI 3D動態掃描頭，3D動態振鏡控制系統，自動上下Z軸以保證最佳加工效果。

4. 嚴格的多重保護控制系統可在野外工作溫度下使用，確保激光打標系統24h穩定連續加工。

5. 軟件支持PLT，DXF，BMP，AI等多種格式的文件，匹配軟件可有CorelDraw, PhotoShop, Ai等。

Application 產品應用

Suitable for large-scale marking, engraving, cutting, dotting and hollowing on greeting card, invitation card, leather, shoe, denim, jeans, textile, fabric, invitation paper card, wood, MDF, acrylic, marble and more flexible materials.

適用於婚禮請帖、生日卡片、酒店邀請卡、皮革、鞋子、牛仔布、牛仔褲、紡織品、織物、木材、中密度纖維板、亞克力、大理石和更具彈性的材料上進行大幅面打標、雕刻、切割和鏤空加工。

Technician Information 技術資料

Model 型號	MY-C6060M		
Marking Area 打標範圍	600*600mm		
Laser Power 激光功率	150-180W		
Optional Laser Power 其他可選激光功率	200-275W		
Marking Speed 打標速度	7000mm/s		
Laser Wavelength 激光波長	10600nm		
Co2 Laser Source CO2激光器	US Coherent		
Scan Head 振鏡頭	US CTI		
Min. Character 最小字符	0.3mm		
Operation Environment 機器使用環境	Temperature 15-30℃ 溫度 10-30℃	Humidity <70% non-condensed 濕度 < 70% 無凝結水	
Power Input 電源輸入	220V/50HZ/1P	110V/60HZ/1P	380V/50-60HZ

Sample Show 樣品展示





Laser Mark Series

UV Laser Marking Machine 紫外激光打標機



Introduction 產品介紹

UV Laser Marking Machine adopts the third-order cavity frequency doubling technology. Compared with infrared laser, UV lasers at 355nm provide a small-size spot and a big focal depth, short laser wavelength interrupts molecular chains of material, can greatly reduces the mechanical deformation and temperature distortion of materials.

紫外激光打標機採用波長為355nm的紫外激光器，經過三階腔倍頻技術，具有光斑直徑小、焦深大、熱擴散效應小等特點。此類激光可打斷材料的分子鏈，可大大降低材料的機械變形和溫度變形。

Feature 產品特點

1. High-quality laser beam, small-size spot, can do super precise marking/engraving;

2. Short UV wavelength 355nm reduces heat effect on work piece, heat affected area is very small, no heating effect, material will not be burned or deformed;

3. Very suitable for the material which is greatly reacted by thermal radiation;

4. With smart and small water chiller, can guarantee the temperature of water for laser source stable.
1. 高質量紫外激光光束、超精細激光斑點、非常適合做超精細效果打標；

2. 355nm短波可減少熱量在工件上的擴散，進而保證打標效果完美和材料表面不被灼傷；

3. 非常適合容易受激光輻射影響較大的敏感材料；

4. 配置智能水冷機、体积小、智能调温、始终保持水温在激光器所需范围温度，不受室温影响。

Application 產品應用

1. The machine is mainly used in precision processing of high-end market, handicrafts, medicine, cosmetics, video and other polymer materials packaging bottle, the mark is very precise and stands wear, better than ink printing and pollution-free;

2. The flexible PCB marking and scribing, silicon and wafer micro hole, blind hole processing;

3. LCD&glass QR code, glass wares punching, metal surface coating, plastic buttons, communications equipment, electronics, gifts, building materials marking and so on.

1. 紫外激光打標機主要用於高端市場的產品加工，如：工艺品、医药、化妆品、影響等高分子材料包装瓶的精密加工，打標精度高、標記耐磨、比油墨印刷好，无污染；

2. 柔性电路板切割和劃線、硅片和晶圓打微孔；

3. LCD玻璃二维码打标、玻璃器皿冲孔、金屬表面塗層打標、塑料按鍵、通訊設備、電子產品、建材等。

Technical Information 技術參數

Model 型號	MY-UV03	
Marking Area 打標範圍	100*100mm	
Laser Power 激光功率	3W	
Optional Laser Power 其他可選激光功率	5W/7W/10W/12W	
Marking Speed 打標速度	7000mm/s	
Laser Wavelength 激光波長	355nm	
Focus Spot Diameter 聚焦直徑	<0.01mm	
Pulse Width 脈衝寬度	18ns	
Min. Character 最小字符	0.15mm	
Operation Environment 機器使用環境	Temperature 15-30℃ 溫度 10-30℃	Humidity <70% non-condensed 濕度 < 70% 無凝結水
Power Input 電源輸入	220V/50HZ/1P 110V/60HZ/1P	

Sample Application 樣品展示





Laser Engrave Series

Art&Craft Laser Engraving Machine 禮物廣告雕刻機

MY-L3040/4060/6090HS



Introduction 產品介紹

3040/4060/6090HS laser engraving and cutting machine is a simple and useful laser processing device that WISELY LASER has specially been developed for the needs of advertising, gift packaging and other relevant industries. The equipment inherits the characteristics of both the former high-speed laser engraving machine and high-speed laser cutting machine. The small machine is equipped with the imported dual rails for more stable operation. Its drawer is beneficial for the collection and disposal of waste. The motorized up/down platform to make the processing more convenient.

This equipment can be used to engrave or cut alone on the surface of various materials and can simultaneously conduct engraving and cutting. The features of equipment are high operating speed, easy to use, low cost, reliable engraving effect and burr-free cut edge. Thus, the grinding is not necessary to handle again and the cutting waste is little. Besides, the engraving depth can be easily adjusted with high precision.

3040/4060/6090HS雕刻切割機是一款簡單而實用的激光加工設備，特別針對廣告、禮品和包裝等相關行業的需求而設計。該機繼承了高速雕刻和精準切割的優點。配置進口高精度雙軌保證機器加工平順和穩定，隨機配置之抽屜方便廢料的收集與處理。整機尺寸較小、淨重適中、配置可拆卸上下三廂體結構，方便日韓等發達國家拆卸機器后搬弄入室。

機器可配置電動升降平台，方便客戶放置厚材料或旋轉輔助器雕刻圓柱體等；配置自動對焦功能，節約對焦時間，大幅提高用戶加工效率，使用戶操作機器更加省心和便捷。

軟件人性化配置，可匹配臺式電腦或便攜式電腦，可USB傳輸或者以太網傳輸或WIFI傳輸，信號穩定傳輸速度快。

Applicable Industry 應用行業

This High-Speed CO2 laser cutting machine can process the plexiglass products, acrylic display panel, wood carving, wood percutaneous flowers, advertising products, crystal characters, packing boxes, models, toys, furniture and so on.

此高速CO2激光切割機可以用於亞克力展示板、木雕浮雕、木材雕花、廣告製品、水晶文字、包裝盒、玩具和家具等。

Technical Information 技術參數

Model 型號	MY-L3040/4060/6090HS
Working Area 加工範圍	400*300/600*400/900*600mm
Laser Power 激光功率	80/90-100/100-130/130-160W
Laser Type 激光類型	Glass CO2 laser tube 二氧化碳封离式玻璃激光管
Transmitting Parts 傳動部件	High-speed CCM Guide Rail 高速模組
Drive Type 驅動類型	Stepper Motor 步进电机
Controller 控制系統	RUIDA DSP Controller 睿达控制系统
Max. Engraving Speed 最大雕刻速度	1200mm/s
Max. Cutting Speed 最大切割速度	1200mm/s
Max. Corner Acceleration 最大拐彎加速度	6000mm/s
Mechanical Vibration in process 加工中機械振動	0.1-0.6
Positioning Accuracy 定位精度	≤0.015mm
Power Supply 電源供應	220V/50HZ/1P or 110V/60HZ/1P
Software Supported 軟件支持	CorelDraw, SolidWorks, AI, PhotoShop, AutoCAD
Graphic Format Supported 文件支持	PLT, DXF, BMP, JPG, GIF, PNG, TIF and so on
Operating Environment 運行環境	T 0℃-45℃ H 5%-95% Free of condensed water 溫度 0℃-45℃ 濕度 5-95% 無凝結水



Laser Cut Series

High-speed Laser Cutting Machine 高速切割機

MY-L1390/1490/1610/1810HS



Introduction 產品介紹

WISELY 1390/1490/1610/1810HS High-Speed CO2 laser cutting machine adopts high-speed guide rail, which can guarantee you get very high speed for thin materials cutting. The high-speed guide rail can bring us Low friction, Low noise, Low vibration, High quality, High performance and High cost efficiency. What is more, we can get wonderful cutting edge.

Comparing with the traditional laser cutting machine, WISELY High-speed Laser Cutting Machine can raise your working efficiency. The cutting speed for WISELY high-speed laser cutting machine can be 130-150% of traditional machine.

WISELY 1390/1490/1610/1810HS高速C02激光切割機採用高速導軌，尤其適用於輕薄材料的高速切割。

该高速激光切割機與傳統的激光切割機相比，具有體積小、低摩擦，低噪音，低振動、高精度与高性能等特点，可以大幅提高您的工作效率。该機的切割速度可達到傳統機器的130-150%。整機尺寸較小、淨重適中、配置可拆卸上下三廂體結構，方便日韓等發達國家拆卸機器后搬弄入室。

軟件人性化配置，可匹配臺式電腦或便攜式電腦，可USB傳輸或者以太網傳輸或者WIFI傳輸，信號穩定傳輸速度快。

Applicable Industry 應用行業

This High-Speed CO2 laser cutting machine can process the plexiglass products, acrylic display panel lenses, wood carving, wood percutaneous flowers, advertising products, crystal characters, packing boxes, models, toys, furniture and so on.

此高速C02激光切割機可以用於有服裝行業、機玻璃製品、亞克力展示板、木雕浮雕、木材雕花、廣告製品、水晶文字、包裝盒、玩具和家具等。

Technical Information 技術參數

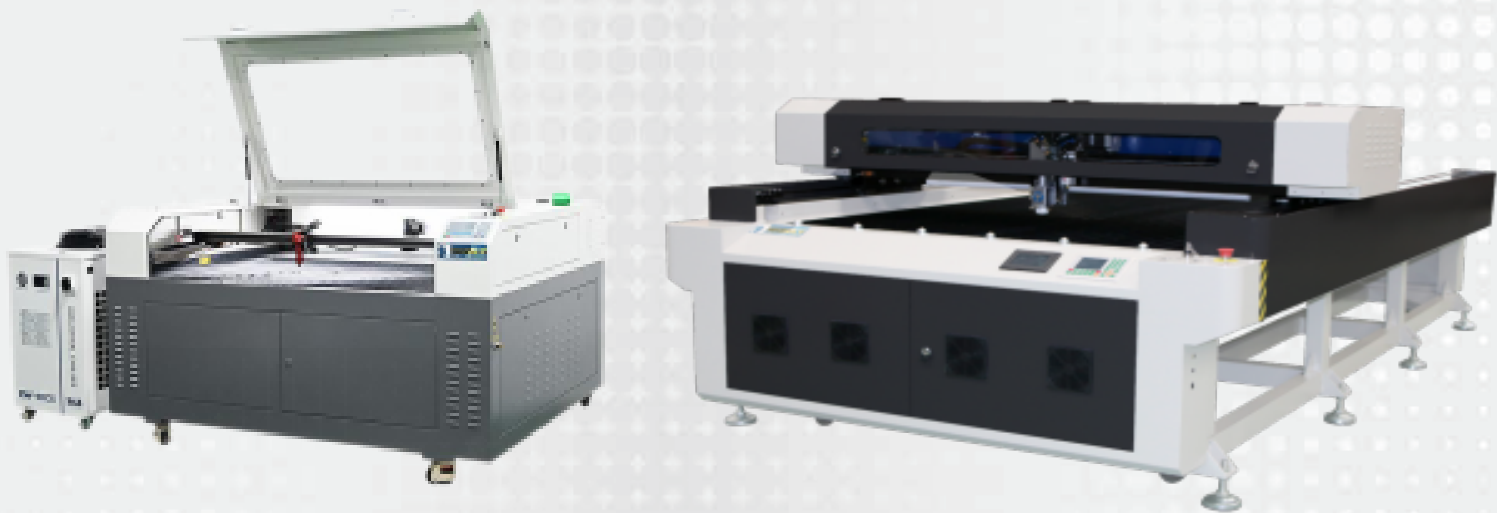
Model 型號	MY-L1390/1490/1610/1810HS
Working Area 加工範圍	1300*900/1400*900/1600*1000/1800*1000mm
Laser Power 激光功率	80/90-100/100-130/130-160W
Laser Type 激光類型	Glass CO2 laser tube 二氧化碳封離式玻璃激光管
Transmitting Parts 傳動部件	High-speed CCM Guide Rail 高速模組
Drive Type 驅動類型	Stepper Motor 步进电机
Controller 控制系統	RUIDA DSP Controller 睿达控制系统
Max. Engraving Speed 最大雕刻速度	1200mm/s
Max. Cutting Speed 最大切割速度	1200mm/s
Max. Corner Acceleration 最大拐彎加速度	6000mm/s
Mechanical Vibration in process 加工中機械振動	0.1-0.6
Positioning Accuracy 定位精度	≤0.015mm
Power Supply 電源供應	220V/50HZ/1P or 110V/60HZ/1P
Software Supported 軟件支持	CorelDraw, SolidWorks, AI, PhotoShop, AutoCAD
Graphic Format Supported 文件支持	PLT, DXF, BMP, JPG, GIF, PNG, TIF and so on
Operating Environment 運行環境	T 0℃-45℃ H 5%-95% Free of condensed water 溫度 0℃-45℃ 濕度 5-95% 無凝結水



Laser Cut Series

Large-format Laser Cutting Machine 大幅面激光切割机

MY-L1325/1530



Introduction 產品介紹

WISELY laser machine fully employ the movement controlling capacity to improve the effect of laser processing. We always focus on the service to field processing in all considerations of software, mechanical structure, electric performance and accessory-choosing. The stability, precision and speed of our products will conduct to be the first-class standard under any sound quality management system in any factory.

In order to meet the demands of large-format cutting in garment and advertising field, the machine flat bed adopts the hardened stable underpin made of reinforced material. Linear guides and precise gear driving system guarantee the stability and precision. Open, nettly workbench made of stainless steel with high flatness is easy to operate and will never fray.

WISELY激光切割機充分利用運動控制能力來提高激光加工效果。在軟件，機械結構，電氣性能和配件選擇等方面，我們始終專注於現場加工服務。此設備之穩定性，精確度和速度將在任何工廠的任何健全的質量管理體系下成為一流的標準。

為滿足大面積厚非金属材料切割的需要，機床平板採用加固材料製成的硬化穩定托板，採用直線導軌和精密齒輪傳動系統，保證了穩定性和精度。開放，平整度高的不銹鋼製成的平穩工作台易於操作，永不磨損。

軟件人性化配置，可匹配臺式電腦或便攜式電腦，可USB傳輸或者以太網傳輸或者WIFI傳輸，信號穩定傳輸速度快。

Applicable Industry 應用行業

The large-format CO2 laser cutting machine can process the acrylic display panel, wood carving, advertising products, crystal characters, die-board packing boxes, building models, furniture and so on.

此大幅面激光切割機可用於服裝行業、亞克力展示板、木材雕花、廣告製品、水晶文字、包裝盒和家具等。

Technical Information 技術參數

Model 型號	MY-L1325/1530
Working Area 加工範圍	1300*2500/1500*3000mm
Laser Power 激光功率	100-130/130-160/150-180W RECI Tube
Laser Type 激光類型	Glass CO2 laser tube 二氧化碳封離式玻璃激光管
Transmitting Parts 傳動部件	HG Series HIWIN Linear Guide Rail HG系列HIWIN線性導軌
Drive Type 驅動類型	Stepper Motor 步进电机
Controller 控制系統	RUIDA DSP Controller 睿达控制系统
Max. Engraving Speed 最大雕刻速度	1200mm/s
Max. Cutting Speed 最大切割速度	1200mm/s
Max. Corner Acceleration 最大拐彎加速度	6000mm/s
Mechanical Vibration in process 加工中機械振動	0.1-0.6
Positioning Accuracy 定位精度	≤0.015mm
Power Supply 電源供應	220V/50HZ/1P or 110V/60HZ/1P
Software Supported 軟件支持	CorelDraw, SolidWorks, AI, PhotoShop, AutoCAD
Graphic Format Supported 文件支持	PLT, DXF, BMP, JPG, GIF, PNG, TIF and so on
Operating Environment 運行環境	T 0℃-45℃ H 5%-95% Free of condensed water 溫度 0℃-45℃ 濕度 5-95% 無凝結水



Laser Cut Series

Separable-Style Stone Laser Engraving Machine 分體石材機

MY-L1060M/1390M



Introduction 產品介紹

WISELY separable style laser engraving machine is developed for heavy materials, such as marble, granite or other stones. It brings great convenience to customers. The machine is designed by upper part and lower part, and the two parts can be separated.

The upper part can be moved down from the machine, and the lower part can configure suitable platform according to customer's needs. The design changes the traditional engraving method. For some heavy materials we can put the upper part onto them, so that avoiding the difficulty of moving material. Meanwhile, it solves the problem that the platform has a limited bearing ability. Both parts can be up and down moving so that engraving objects with greatly thickness-changing is much easier to process.

此機專為大理石、花崗岩或其他石材等重型材料的激光雕刻而設計。機器分上下兩層結構，上層裝載所有電氣部分，下層純為工作台。鬆開機器上層腔體，可將機器上部分卸載，再置於重型石材上，即可進行激光加工，不必將重型石材裝載到機器工作檯面再加工，省卻了對於重型石材的裝卸帶來的許多麻煩。兩人即可完成上下兩層的裝卸工作。

此種突破傳統的機器構造，成功解決了平台承載能力有限的問題，且對厚度變化很大的雕刻對象更容易處理。

Applicable Material 應用材料

Marble, Granite, Tombstone, Acrylic, Wood, Bamboo, Double-color Sheet, Paper, Leather, Textile, Rubber, Perspex, MDF, Composite Material and so on.

大理石、花崗岩、墓碑、亞克力、木材、竹、雙色板、紙張、皮革、紡織物、中密度板以及其他的複合材料等。

Technical Information 技術參數

Model 型號	MY-L1060/1390M
Working Area 加工範圍	1000*600/1300*900mm
Laser Power 激光功率	60/80W
Laser Type 激光類型	Glass CO2 laser tube 二氧化碳封离式玻璃激光管
Transmitting Parts 傳動部件	HIWIN Linear Guiderail HIWIN直線導軌
Drive Type 驅動類型	Stepper Motor 步进电机
Controller 控制系統	RUIDA DSP Controller 睿达控制系统
Max. Engraving Speed 最大雕刻速度	1000mm/s
Max. Cutting Speed 最大切割速度	600mm/s
Max. Corner Acceleration 最大拐彎加速度	3500mm/s
Mechanical Vibration in process 加工中機械振動	0.1-0.6
Positioning Accuracy 定位精度	≦0.02mm
Power Supply 電源供應	220V/50HZ/1P or 110V/60HZ/1P
Software Supported 軟件支持	CorelDraw, SolidWorks, AI, PhotoShop, AutoCAD
Graphic Format Supported 文件支持	PLT, DXF, BMP, JPG, GIF, PNG, TIF and so on
Operating Environment 運行環境	T 0℃-45℃ H 5%-95% Free of condensed water 溫度 0℃-45℃ 濕度 5-95% 無凝結水